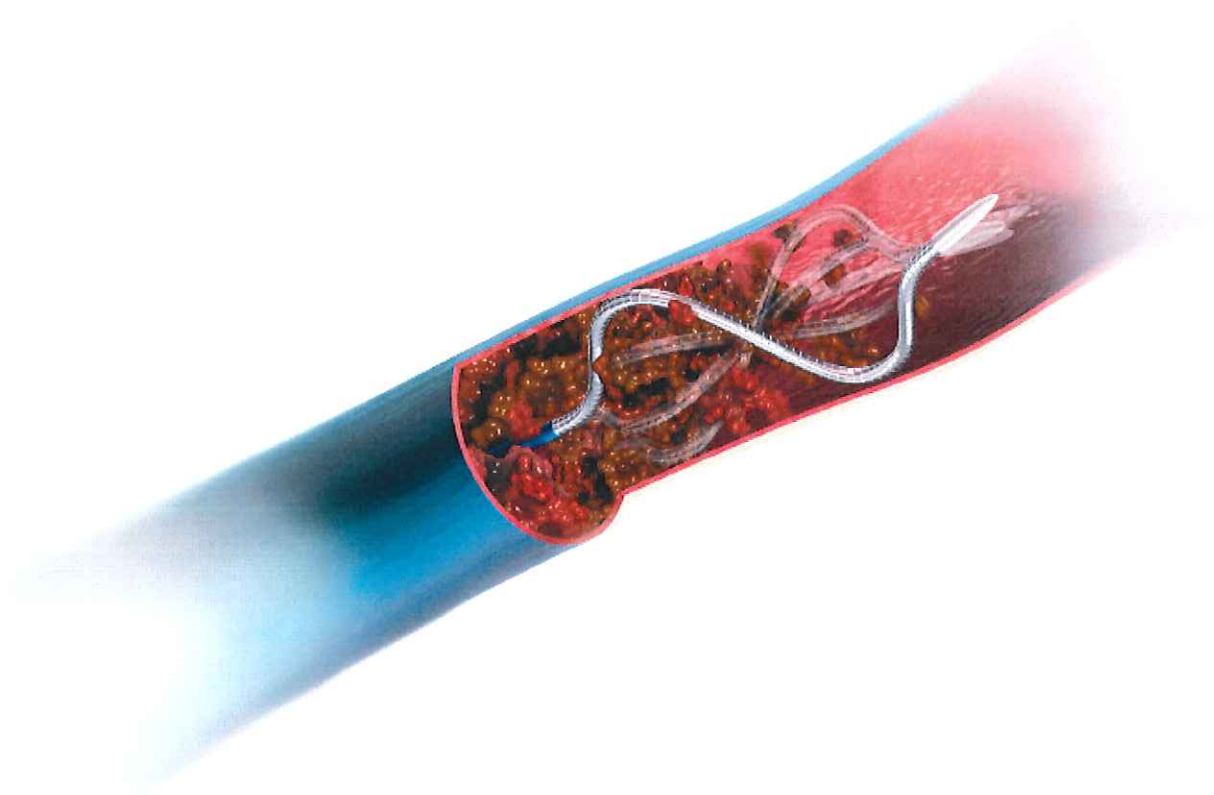


# POWER in the Peripheral

CLEANER XT™ and CLEANER 15™ Rotational Thrombectomy System



  
**ARGON**  
MEDICAL DEVICES

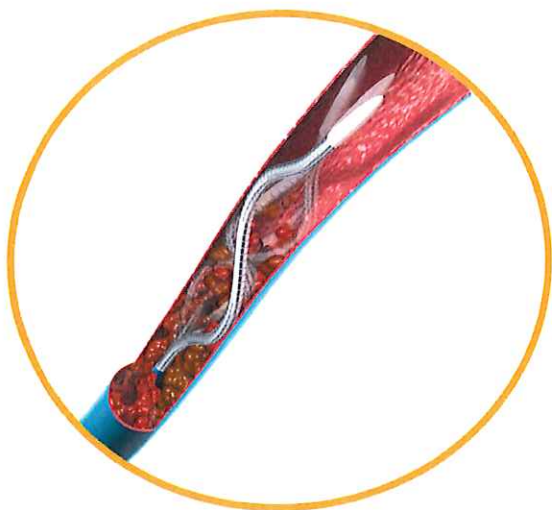
# The **ONLY** wall-contacting rotational thrombectomy system indicated for mechanical declotting and infusion of thrombolytics in the **PERIPHERAL VASCULATURE.**

Available in two sizes and strengths to meet your thrombus management needs:

## CLEANER XT™ Rotational Thrombectomy System

For greater steerability and effective maceration in smaller lumen vessels

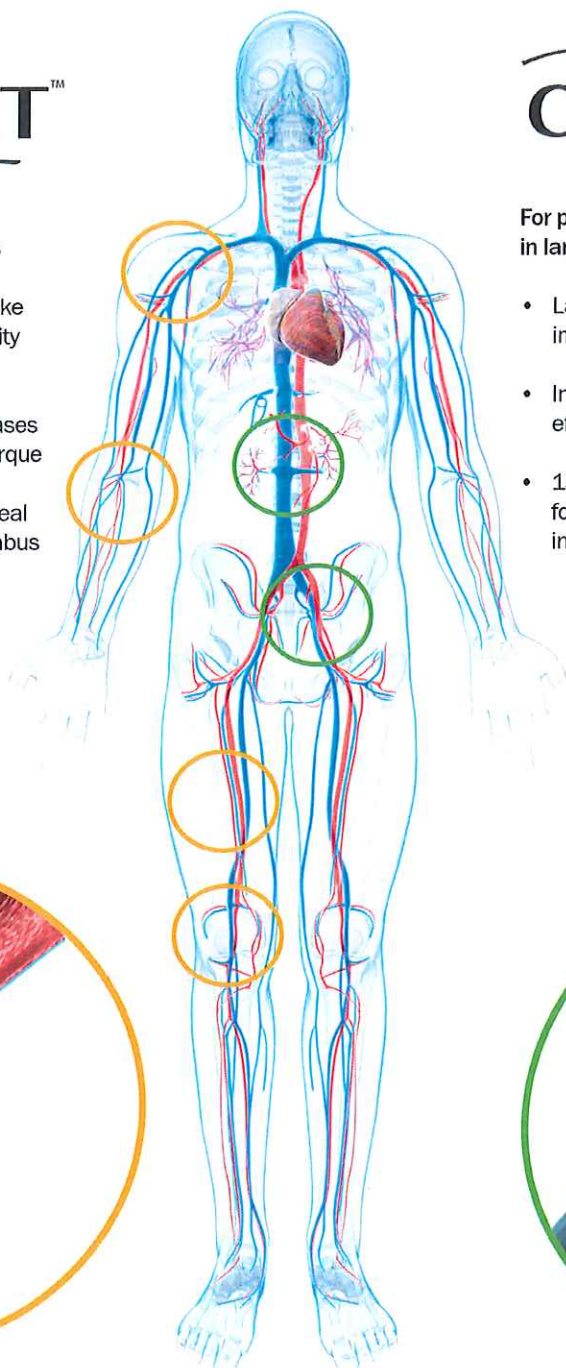
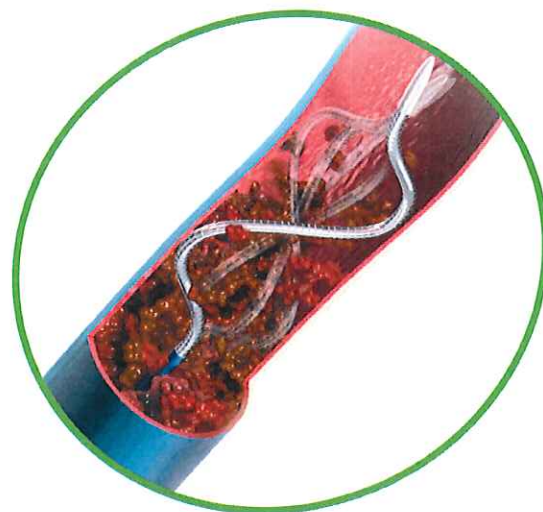
- Low profile (.035", 6F) guidewire-like design enables excellent steerability through vessel tortuosity
- Improved drive shaft design increases efficiency of power transfer and torque
- 9mm sinusoidal wire amplitude ideal for removal of wall-adherent thrombus in small lumens



## CLEANER 15™

For powerful and effective maceration in larger lumen vessels

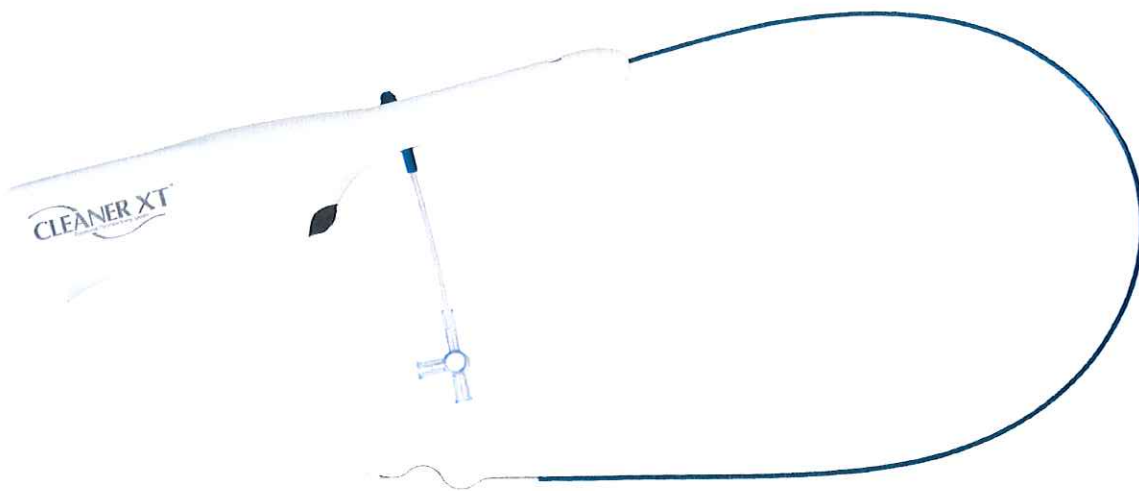
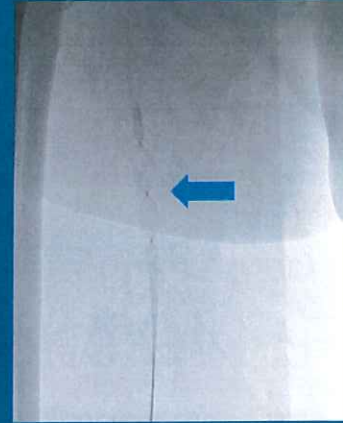
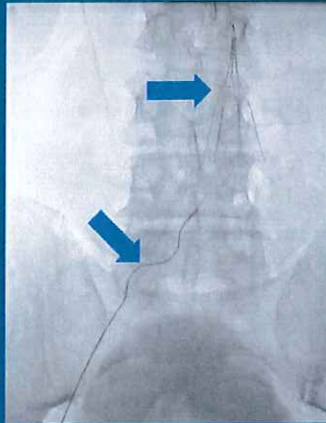
- Larger wire diameter (.044", 7F) improves pushability and performance
- Increased torque and power provides efficient thrombus maceration
- 15mm sinusoidal wire amplitude ideal for removal of wall-adherent thrombus in large lumens





In the two images to the right, a patient is treated for deep vein thrombus (DVT) with the CLEANERXT Rotational Thrombectomy System from a popliteal access point. In Figure A, the CLEANERXT is positioned in the left common iliac vein with the OptionELITE IVC filter placed in the IVC. In Figure B, the rotational vortex created by CLEANERXT's sinusoidal wire is seen working in the left femoral vein.

*Images used with permission of Dr. Dan Becker, Memphis Interventional Radiology Clinic*



### Designed for Successful Outcomes

- Indicated for use in both the peripheral vasculature and in AV dialysis fistulae/grafts
- Available in 65 cm length for upper extremity or short reach needs
- Available in 135 cm length for popliteal/femoral access or other long reach needs

### Powerful Yet Atraumatic

- Powerful rotating action of the single sinusoidal wire effectively macerates wall-adherent thrombus while reducing the risk of endothelial damage<sup>1</sup>
- Enables infusion of thrombolytics and contrast media through the built-in 3-way side-port and distal side hole
- Guidewire-like design enables steerability through tortuous anatomy

### Ergonomic, One-Piece Design

- Choose between low profile (6F) system or more robust (7F) system for larger vessels
- Single-piece system, with no capital equipment to purchase
- Ready to use immediately, with no assembly required

**“...A greater than 50% thrombus resolution was achieved in 97.6% of patients, without significant morbidity, in a single-session procedure.”<sup>2</sup>**

<sup>1</sup>F. Vega. Safety Comparison of Cleaner Rotational Thrombectomy System versus Arrow PTD in Native Vessels.

<sup>2</sup>Köksoy C, et al. Pharmacomechanical Thrombolysis of Symptomatic Acute and Subacute Deep Vein Thrombosis with a Rotational Thrombectomy Device. *Journal of Vascular and Interventional Radiology* 2014; 25:1895-1900.



### CLEANER XT ORDERING INFORMATION

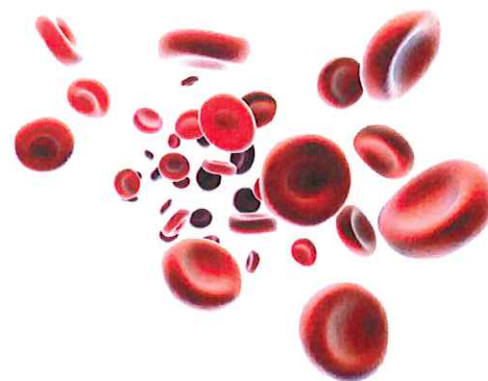
QUANTITY	CATALOG NUMBER	CATHETER OD	LENGTH	SINUSOIDAL WIRE AMPLITUDE
_____	700009XT	6F	65cm	9mm
_____	700109XT	6F	135cm	9mm



### CLEANER 15 ORDERING INFORMATION

QUANTITY	CATALOG NUMBER	CATHETER OD	LENGTH	SINUSOIDAL WIRE AMPLITUDE
_____	700015	7F	65cm	15mm
_____	700115	7F	135cm	15mm

\_\_\_\_\_  
 PHYSICIAN'S SIGNATURE



1445 Flat Creek Road  
 Athens, Texas 75751 USA  
 800.927.4669 Customer Service  
 903.677.9396 Fax  
 www.argonmedical.com

© 2017 Argon Medical Devices, Inc.. All Rights Reserved.  
 No reproduction of any portion of this work shall be made  
 without prior permission of the author  
 96-6000-39/0217B